

47 PRINCE'S GATE

LONDON SW7

Gross Internal Area = 840 sq. metres

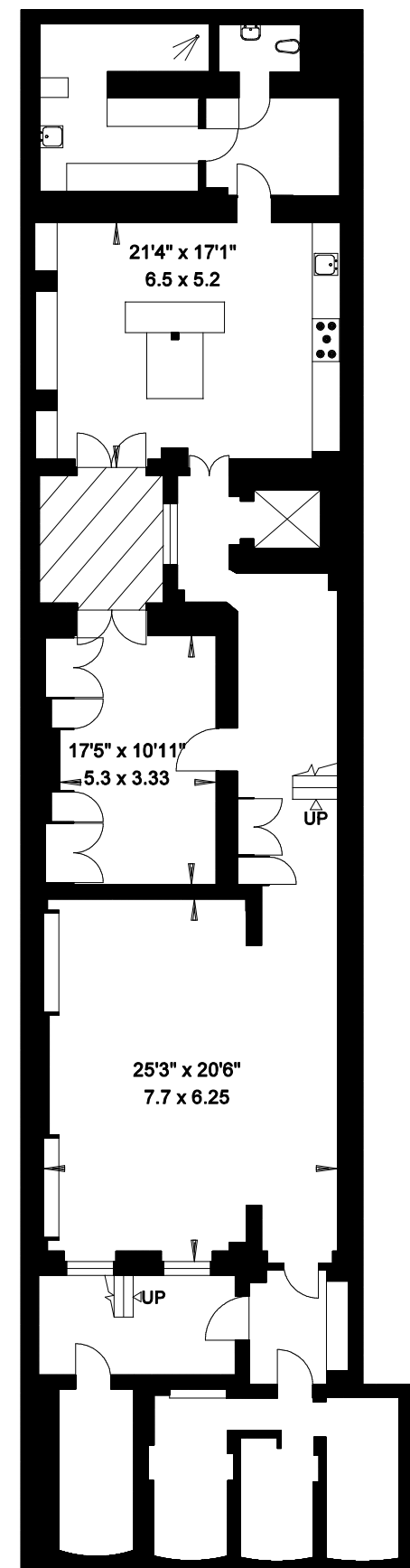
9050 sq. feet

(Including Vaults & Shaded Lightwell)

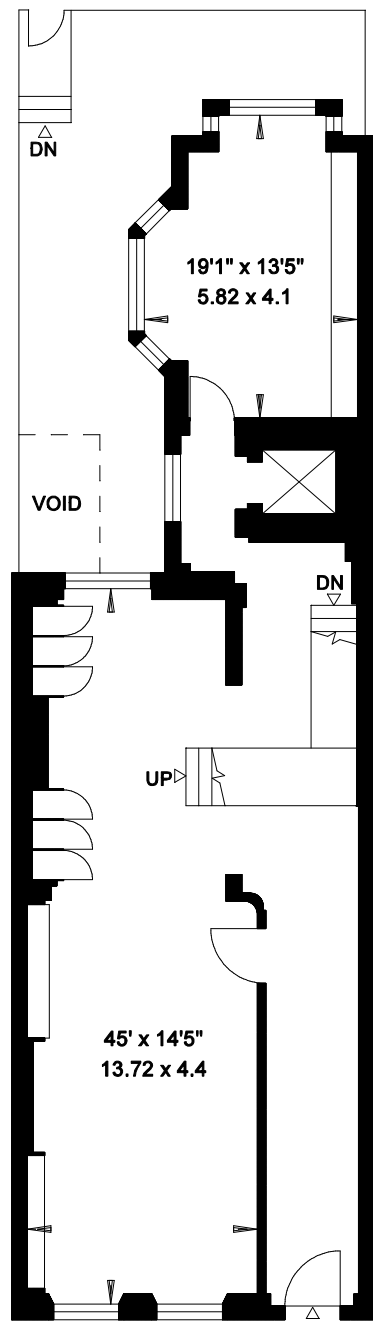
(Excluding Walled Terrace Level)

Walled Terrace Level = 46 sq. metres

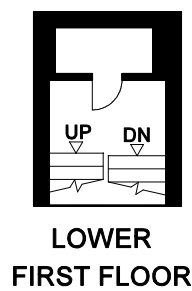
497 sq. feet



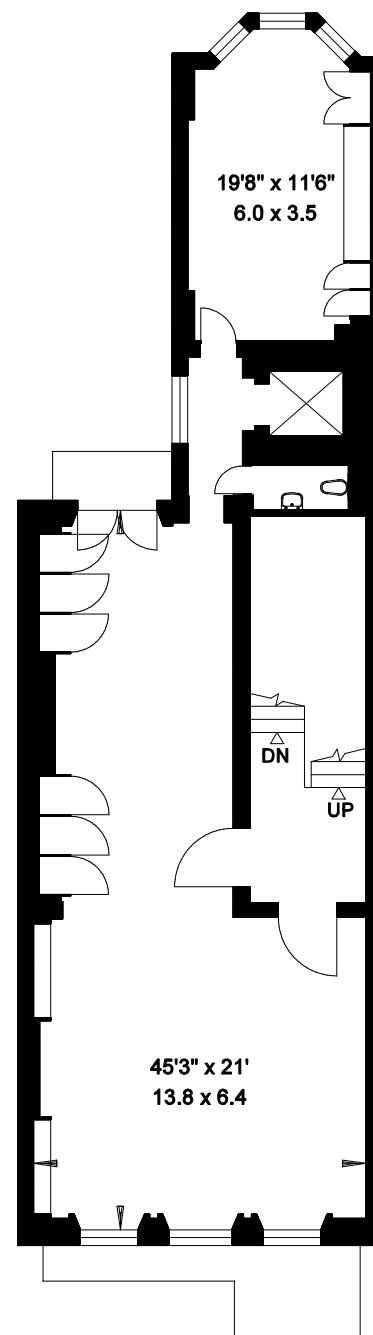
LOWER GROUND FLOOR



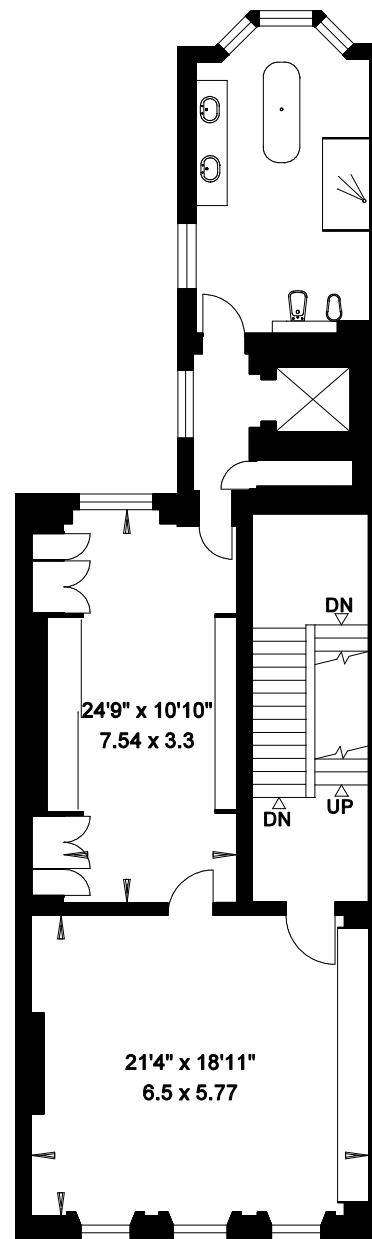
GROUND FLOOR



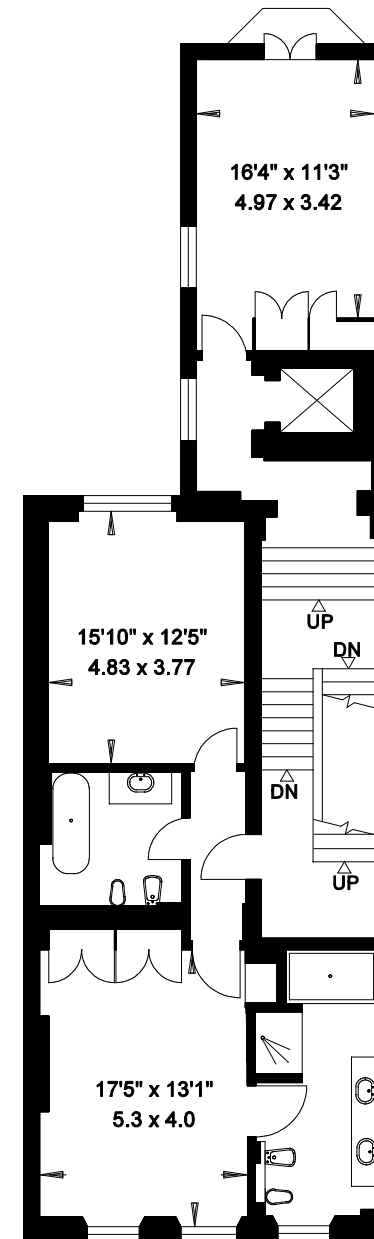
LOWER FIRST FLOOR



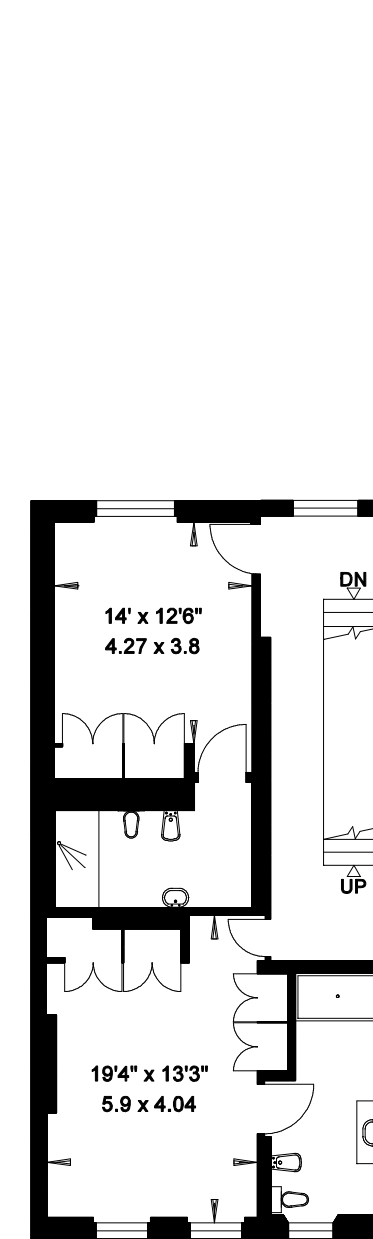
FIRST FLOOR



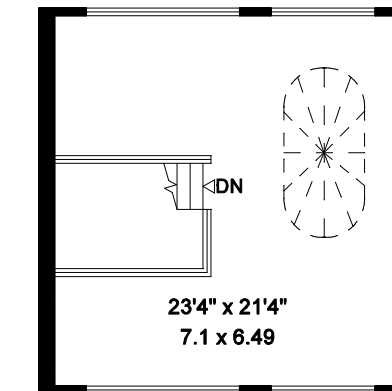
SECOND FLOOR



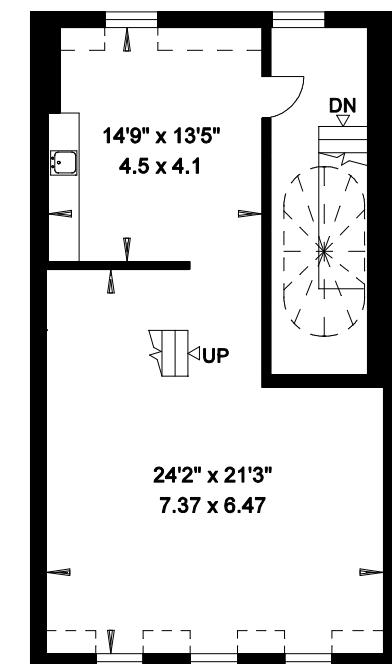
THIRD FLOOR



FOURTH FLOOR



WALLED ROOF TERRACE



FIFTH FLOOR

Plans produced by
PLANAID: 020 8673 1961